

## Hostel Room Registration Form

### Dorms by PSB Academy @ yo:HA Hostel Pearl's Hill

201 Pearl's Hill Terrace, Singapore 168977

**\*Important notes:**

1. Please complete this form and email to: [dorms@psb-academy.edu.sg](mailto:dorms@psb-academy.edu.sg) at least 2 weeks before arrival. If the form is completed in hand-written form, please write clearly and in UPPER CASE.
2. The final approval of the accommodation is subjected to ALL of the following:
  - a) ICA student pass approval
  - b) Room availability
  - c) Return of signed Hostel Room Agreement
  - d) Full Payment made for 3 months accommodation fees + 1 month security deposit
3. In circumstances where you arrive earlier than the commencement date, please make your own alternative accommodation arrangements.
4. For any emergencies or any further enquiries for Dorms, please contact +65 8866 6310 for assistance

**SECTION 1: ACCOMMODATION INTEREST (Please tick ONE)**

Type of Room	Accommodation Charges include Shared Utilities inclusive of GST (per person per month)	Admin Charges inclusive of GST (one-time payment)	Please tick (✓) ONE	Meet & Greet Services (Please tick)
1-Bedroom Apartment Quad Sharing #	\$642.00	\$53.50		
2-Bedroom Apartment 4 Sharing # – 2 beds per room	\$877.40	\$53.50		
2-Bedroom Apartment 6 Sharing # – 3 beds per room	\$588.50	\$53.50		

PSB Academy reserves the rights to change the above-mentioned rates and charges without prior notice.

#: 1-Bedroom Quad Sharing means 4 persons to a room in the apartment. Shared Utilities will be capped at \$80/month.

#: 2-Bedroom 4 sharing means 2 persons to a room – making it 4 persons in the apartment. Shared Utilities will be capped at \$120/month.

#: 2-Bedroom 6 sharing means 3 persons sharing one room – making it 6 persons in the apartment. Shared Utilities will be capped at \$120/month.

**SECTION 2: APPLICANT'S PARTICULARS ( KINDLY ATTACH A COPY OF YOUR PASSPORT )**

Name of Applicant (as in NRIC / Passport) \*Mr / Miss (\*Please delete accordingly)

FIN / Passport No. (Include prefix)		Nationality	DOB (DD/MM/YY)
Gender <input type="checkbox"/> Male <input type="checkbox"/> Female		E-mail Address	
Home Address			Postal Code
House or Mobile No (please include country/area code)			Home Tel No.
Course Enrolled			Programme Intake (MM/YY)



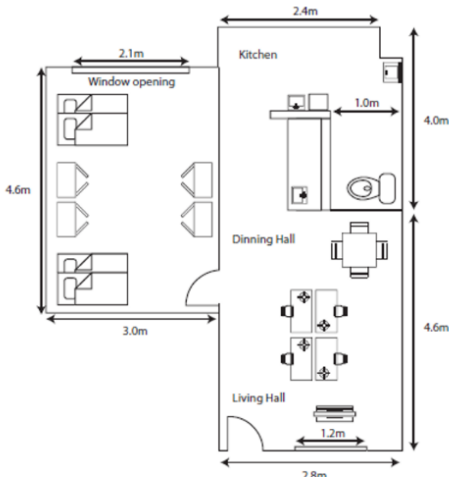
## Hostel Room Registration Form

### Dorms by PSB Academy @ yo:HA Hostel Pearl's Hill

#### Value – Added Services

- Complimentary Bedding Set: pillows, bedsheet & blanket.
- Orientation upon check-in: briefing on using public transport from hostel to campus, familiarise the surrounding and amenities, where to eat and shop.
- Maintenance of common areas (outside room unit).
- WiFi available for 2 devices per password.
- Free usage of facilities – Basketball Court and BBQ Pit (inform yo:HA Hostel Management).
- Regular bonding activities for PSB Academy student residents.

#### Hostel 1-BR apartment - Quad



Type : 1 Bedroom (Quad)  
GFA : 450 sqft (approx.)

#### Furnishing

##### Living Room

- 32" LCD TV with stand
- 4-seater dining table
- 4 x Study tables with chair

##### Kitchen

- Built in cabinet with sink
- Washing machine
- 2-door refrigerator
- Induction Cooker
- Microwave oven

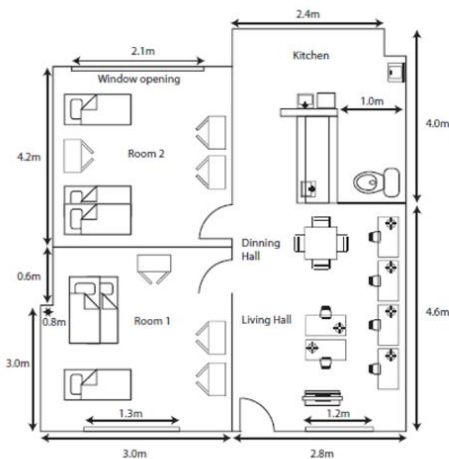
##### Bedroom

- 2 x Double Deck beds with mattress
- 4 x 2-door wardrobes
- Inverter air-conditioning

##### Toilet

- Instant water heater
- Mirror & accessories

#### Hostel 2-BR apartment - Triple



Type : 2 Bedroom (Triple)  
GFA : 530 sqft (approx.)

#### Furnishing

##### Living Room

- 32" LCD TV with stand
- 4-seater dining table
- 6 x Study table with chair

##### Kitchen

- Built in cabinet with sink
- Washing machine
- 2-door refrigerator
- Induction Cooker
- Microwave oven

##### Bedroom (per room)

- 1 x Single bed with mattress
- 1 x Double deck bed with mattress
- 3 x 2-door wardrobe
- Inverter air-conditioning

##### Toilet

- Instant water heater
- Mirror & accessories