

DORMS BY PSB ACADEMY @ yo:HA HOSTEL PEARL'S HILL

REGISTER NOW*
for your home away from home!



10-minute
walk to
Chinatown MRT



5-7 minute walk
to amenities like
banks, shopping,
eateries and
supermarkets



FREE use of
facilities including
basketball court
and BBQ pits



Gym is available
at monthly fee



Free WiFi



Mattress and bed linen, personal wardrobe,
study table, fridge provided in rooms



24-hour
security

- Maintenance of common areas and air-conditioning
- Personal liability coverage

Here are some of the perks you'll be able to enjoy at Dorms by PSB Academy @ yo:HA Hostel Pearl's Hill, located at 201 Pearl's Hill Terrace, Singapore 168977

For more information about Dorms by PSB Academy, visit:
psb-academy.edu.sg/dorms

Email: dorms@psb-academy.edu.sg
Contact: (65) 6390 9210



psb
ACADEMY

*Registration for interest only. This does not guarantee you a room until formal application is complete and contractual obligations for accommodation determined by PSB Academy are met. Applications apply to new international students joining PSB Academy's full-time programmes only. T&Cs apply.

DORMS BY PSB ACADEMY @ yo:HA HOSTEL PEARL'S HILL

FIND YOUR WAY to yo:HA Hostel

Monthly Gatherings

Hostelites can look forward to a monthly gathering that aims to engage and integrate them into the PSB Academy community.



Chinese New Year Celebration

Hostel Gathering @ yo:HA Hostel

“PSB Academy staff regularly engages the students to ensure that they are living and coping well to the new environment, especially when most of us are here in Singapore for the first time.”

Aayush Gupta (Resident Mentor),
Diploma in InfoComm Technology, PSB Academy

“Being a sports enthusiast, the hostel has facilities like the gym as well as the basketball court that allows me to de-stress after a long day at school. It is definitely a study-life balance for me.”

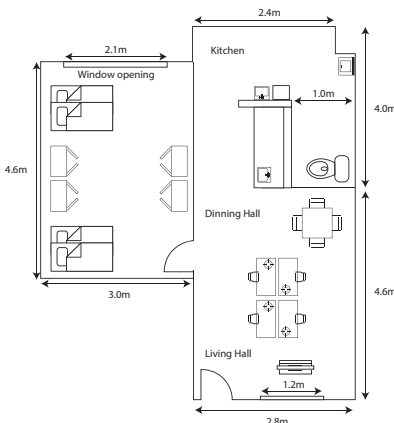
Guo Changqi, Certificate in English Proficiency, PSB Academy



Accommodation Options

(subject to change)

Hostel 1-BR apartment - Quad



Type : 1 Bedroom (Quad)
GFA : 450 sqft (approx.)

Furnishing

Living Room

- 32" LCD TV with stand
- 4-seater dining table
- 4 x Study tables with chair

Kitchen

- Built in cabinet with sink
- Washing machine
- 2-door refrigerator
- Induction Cooker
- Microwave oven

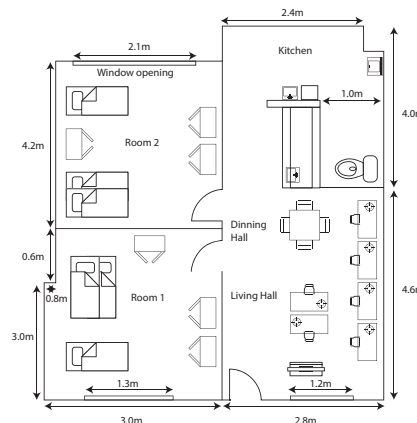
Bedroom

- 2 x Double Deck beds with mattress
- 4 x 2-door wardrobes
- Inverter air-conditioning

Toilet

- Instant water heater
- Mirror & accessories

Hostel 2-BR apartment - Triple



Type : 2 Bedroom (Triple)
GFA : 530 sqft (approx.)

Furnishing

Living Room

- 32" LCD TV with stand
- 4-seater dining table
- 6 x Study table with chair

Kitchen

- Built in cabinet with sink
- Washing machine
- 2-door refrigerator
- Induction Cooker
- Microwave oven

Bedroom (per room)

- 1 x Single bed with mattress
- 1 x Double deck bed with mattress
- 3 x 2-door wardrobe
- Inverter air-conditioning

Toilet

- Instant water heater
- Mirror & accessories